

Your Love Never Fails

Words and Music by
Chris McClarney and Anthony Skinner

♩ = 116

INTRO

Dm

B♭

F

C

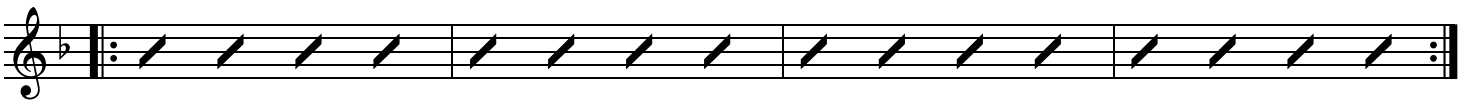


5

B♭

Dm

C



VERSE

9

Dm

B♭

F



1. Noth - ing can — sep - a - rate; — E - ven if I
2. The wind is strong, and the — wa - ter's deep, — but I'm not a - lone here in these

12

C

Dm

B♭

F

C



ran a - way, Your — love nev - er fails. —
o - pen seas; Your — love nev - er fails. —

17

Dm

B♭

F



I know I — still — make mis - takes, — but You have new mer - cies for me
The chas - m — is — far too wide, — I nev - er thought I'd reach the

20 C Dm B \flat F C

ev - 'ry-day; Your __ love nev - er fails. __
oth - er side; Your __ love nev - er fails. __

CHORUS

25 B \flat F C Gm 7

You stay the same __ through the a - ges; Your __ love nev - er chang-

29 B \flat F C Gm 7

- es. There may be pain in __ the night, __ but joy comes in the morn - ing.

33 B \flat F C

And when __ the o - ceans rage, __ I don't have _

36 Gm 7 B \flat

__ to be a - fraid, __ be - cause I

Last time to Coda \oplus 1. **INSTRUMENTAL**

38 F C Gm 7 B \flat

know that _ You love _ me. Your __ love nev - er fails. __

42 Dm C

42 Dm C

INSTRUMENTAL

46

B \flat

Dm

C

50

1. 2.

BRIDGE

B \flat

Dm

54

C

B \flat

57

Dm

C

1, 2.

3.

D.S. al Coda

\oplus Coda

61

C

INSTRUMENTAL

B \flat

Dm

65

C

B \flat

BRIDGE

B \flat

70 Dm C B \flat

work to - geth - er for my _____ good. You make _ all things

74 Dm C

work to - geth - er for my _____ good. You make _

1. repeat as desired 2.

CHORUS

78 B \flat F C

And You stay the same _ through the a - ges; Your .

81 Gm 7 B \flat F

_ love nev - er chang - es. There may be pain in _ the night, _ but

84 C Gm 7 B \flat F

joy comes in the morn - ing. And when _ the o - ceans rage, .

88 C Gm 7 B \flat

_ I don't have _ to be a - fraid, _ be - cause I

ENDING

91 F C B \flat

know that _ You love _ me.

95

Dm

C

B \flat

A musical staff in treble clef with a key signature of one flat (Bb). The staff contains a series of slanted lines representing a guitar accompaniment pattern. The staff is divided into measures by vertical bar lines. Above the staff, the chords Dm, C, and Bb are indicated. The staff ends with a double bar line and a diamond-shaped repeat sign.